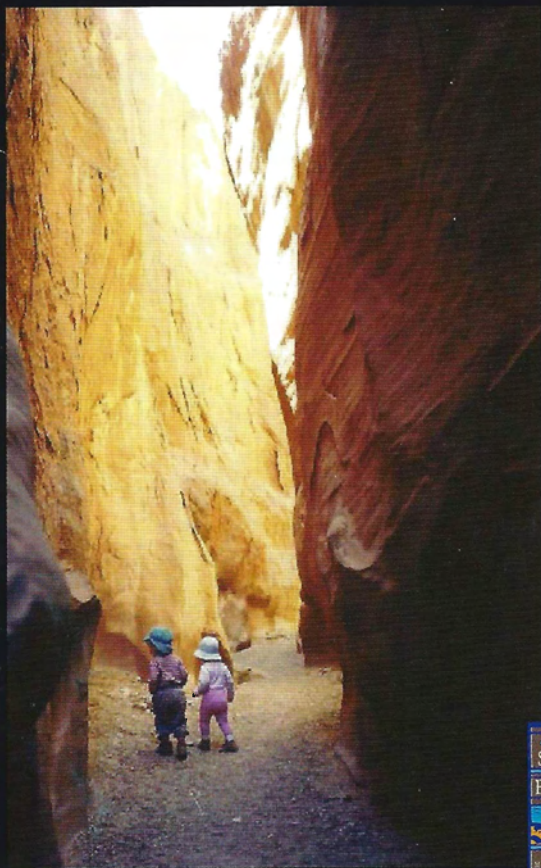


GRAND STAIRCASE-ESCALANTE NATIONAL MONUMENT



Visitor Information



SCENIC DRIVES

PAVED

Hwy 89 stretches 72 miles between Kanab, UT and Page, AZ and offers views of the Vermilion Cliffs and Kaiparowits Plateau.

Scenic Byway 12 is Utah's first All-American Road, winding 124 miles from Hwy 89 to Torrey, UT, through vast slickrock benches and canyons.

Scenic Backway Johnson Canyon Road #501/Skutumpah Road #500 between Hwy 89 and Cannonville travels north 16 miles on paved and 34 miles on dirt surfaces, passing through the cliffs of the Grand Staircase.

Scenic Backway Burr Trail #100 is paved for the first 31 miles traveling east from Boulder, UT. This road turns to dirt at the Capitol Reef National Park boundary.

DIRT OR CLAY SURFACE

(Impassable when wet)

Scenic Backway Smoky Mountain Road #300 is 78 miles long from Big Water, UT to Escalante, UT, traveling along the Kaiparowits Plateau.

Scenic Backway Cottonwood Road #400 meanders 46 miles between Hwy 89 and Kodachrome Basin State Park along the Cockscomb.

Scenic Backway Hole-in-the-Rock Road #200 wanders southeast for 57 miles one way. Four-wheel drive vehicles are required for last 7 miles.

VISITOR CENTERS

GSENM Headquarters
Bureau of Land Management
Kanab Complex
669 South Hwy 89A
Kanab, UT 84741
(435) 644-1200

Big Water Visitor Center
20 Revolution Way
Big Water, UT 84741-2216
(435) 675-3200

Cannonville Visitor Center
10 Center Street
Cannonville, UT 84718
(435) 826-5640

Glendale Information Station
155 North Main Street
Glendale, UT 84729

Escalante Interagency
Visitor Center
755 West Main
Escalante, UT 84726
(435) 826-5499

Kanab Visitor Center
745 East Hwy 89
Kanab, UT 84741
(435) 644-1300



GSENM website:
http://www.blm.gov/ut/st/en/fo/grand_staircase-escalante.html

BLM-UT GI-07-003-8000

Where to go and what to do if you have...

An Hour Or Two:

Name	Area	Type	Miles	Description
Walks and Talks Presentations and Field Trips	All Visitor Centers	Guided	0-5	Join a ranger, researcher, or citizen scientist for intermittently scheduled programs and learn about natural and cultural resources on Grand Staircase-Escalante National Monument (GSENM).
Junior Explorer Program and Discovery Packs	All Visitor Centers	Kids	N/A	Kids can become a Junior Explorer scientist by completing an activity book during their visit to the Monument. To help Junior Explorers learn more, Discovery Packs, with tools for exploring nature, are available for loan at GSENM visitor centers.
Devil's Garden	Escalante	Walk	0-1	Visit a land of sculptured slickrock and hoodoos.
Hells Backbone Road (USFS)	Escalante/Boulder	Drive	45	Enjoy scenic views looking down from the forest into Box-Death Hollow Wilderness area.
Escalante Petrified Forest State Park	Escalante	Hike	1.5	Walk short trails to scenic views and petrified wood.
Anasazi State Park Museum	Boulder	Museum	N/A	See interior exhibits and covered exterior archaeological site of the 800 year-old Coombs pueblo.
The Toadstools	Kanab/Big Water	Hike	1.5	Marvel at the colorful hoodoos and balanced rocks.
Kodachrome Basin State Park	Cannonville	Hike	0-5	Explore the sandstone spires and vibrant rock formations.
Grosvenor Arch	Cannonville	Walk	0.25	Gaze at a extraordinary double arch.

Half A Day:

Name	Area	Type	Miles	Description
Lower Calf Creek Falls	Escalante	Hike	3 one-way	Take a hike to 120-foot water fall.
Peek-A-Boo and Spooky Canyons	Escalante	Hike	2-6	Glide along slot canyons, not recommended for dogs.

All Day:

Name	Area	Type	Miles	Description
Lick Wash	Kanab/Cannonville	Hike	4 one-way	Experience this narrow canyon.
Escalante River Gorge	Escalante	Hike	15 one-way	Trek this large canyon with many stream crossings.

Several Days:

Combine several day trip options to suit your time, travel route, and interests. Contact one of our visitor centers for more information on backpacking routes. Free overnight camping permits are required.



Before you go...

BE PREPARED

PLAN AHEAD when heading into the backcountry. Start with a full gas tank and carry extra food, clothing, and water. Tell friends where you are going and for how long. Don't travel or hike alone.

ROADS within the Monument are mostly dirt, clay, or gravel. Dirt surface roads are subject to flooding and impassable when wet. High clearance four-wheel-drive vehicles are recommended. Please inquire at visitor centers for road conditions. Leave gates open or closed as you find them. Respect private property.

Visitors are responsible for knowing the appropriate rules and regulations. All vehicles and bicycles must stay on roads. Driving off road is prohibited. 43 CFR 8341.1 (c)

BE INFORMED

HIKING/BACKPACKING opportunities are predominantly along undeveloped trails. The ideal seasons to hike are spring and fall.

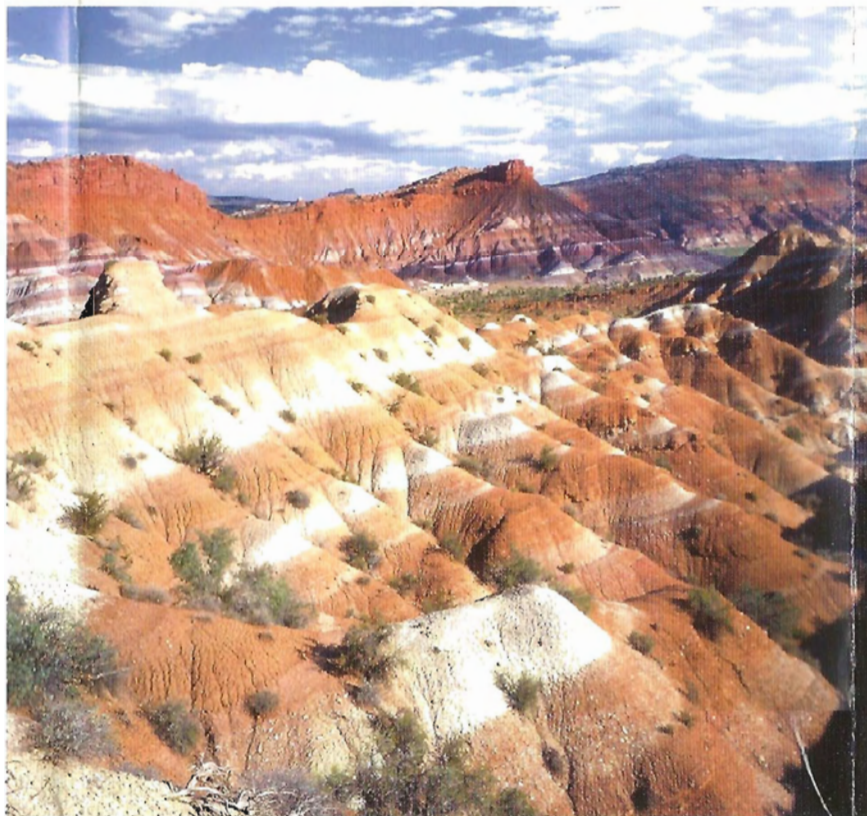
GROUP SIZE is limited to 25 persons for most areas along the main roadways within the interior of the Monument. Along backcountry trails, the group size limit is 12. For larger groups, contact the visitor centers.

OVERNIGHT PERMITS are required within the Monument for all overnight car camping or backpacking. Permits are free of charge and may be obtained at any of our visitor centers or developed trailheads.

CAMPING sites within the Monument are mostly undeveloped. Camp in areas previously disturbed. Do not camp at trailheads or disturb vegetation. Pack out what you pack in and use human waste sanitation devices. Calf Creek, Deer Creek, and White House are developed campgrounds available on a first-come-first-serve basis.

CAMPFIRES in developed campgrounds are allowed only in fire grates, fire pits, or fire pans. Campfires are not allowed below the rims in the Escalante Canyons, Paria/Hackberry Canyons, or on No Mans Mesa. Campfires are prohibited in archaeological sites, rock shelters, or alcoves Monument-wide. Wood collection is prohibited in developed campgrounds or along roads. Camp stoves and fire pans are encouraged for use throughout the Monument.

FEES are charged for camping at Calf Creek, Deer Creek, and White House campgrounds. In addition, use fees are charged in the Paria Canyon-Vermilion Cliffs Wilderness Area.



RECREATIONAL STOCK is limited to 12 animals in areas where group size is limited to 12 people. All hay used on BLM lands must be certified weed-free. Horses or other pack animals are not allowed in relict plant communities, archaeological sites, rock shelters, or alcoves.

MOUNTAIN BIKES are allowed on all roads. No cross-country or slickrock riding is permitted in the Monument.

GUIDED TRIPS with professional outfitters are available within the Monument. Check our website or visitor centers for a complete list of authorized outfitters.

COLLECTION OF OBJECTS such as rocks, petrified wood, fossils, artifacts, and plants is prohibited without a permit. The collection of small amounts of fruits and nuts for personal use is allowed.

CULTURAL/PALEONTOLOGICAL sites are protected to preserve the past. Please do your part by leaving artifacts and fossils where you find them. Do not touch, draw, scratch, or paint on rock surfaces. Report vandalism to local law enforcement.

BE SAFE

SERVICES AND WATER are generally not available in the Monument. Purify any water obtained from undeveloped sources. Drink at least one gallon of water per person per day, whether you are hiking or driving.

WILDLIFE should not be fed, handled, or harassed, for your safety and health, as well as for theirs. The Utah Division of Wildlife Resources regulates hunting, fishing, and trapping on the Monument.

WEATHER can change suddenly in the Monument. The rainy season lasts roughly from July - September, with thunderstorms and flash floods. Summer temperatures can exceed 100 degrees Fahrenheit. In winter, snow and subzero temperatures may occur.

FLASH FLOODS are possible any time of year. If the potential for storms is high for the region, avoid traveling in narrow canyons. Camp on high ground, away from streambeds. If you find yourself in a flood situation, climb to the highest possible point. Flood conditions usually subside in 8 to 12 hours, but it is possible to be stranded for several days.

LEARNING FROM THE LAND



Grand Staircase-Escalante National Monument was established by Presidential Proclamation in 1996 when it became the Bureau of Land Management's first national monument. According to the Proclamation, "Grand Staircase-Escalante National Monument's vast and austere landscape embraces a spectacular array of scientific and historic resources. This high, rugged, and remote region,



where bold plateaus and multi-hued cliffs run for distances that defy human perspective, was the last place in the continental United States to be mapped. Even today, this unspoiled natural area

remains a frontier, a quality that greatly enhances the Monument's value for scientific study...."

Spanning nearly 1.9 million acres of America's public lands, Grand Staircase-Escalante National Monument (GSENM) is a fantastic outdoor laboratory offering scientists from every walk of life extraordinary insight into what sustains, maintains, and explains our world...and beyond.

Scientists from around the world in many different fields of study have made great strides in understanding everything from the specialized relationship between bees and native desert plants to how the National Aeronautics and Space Administration (NASA) may detect fluids on Mars.

What scientists are learning, they are sharing. Research on GSENM has produced a wealth of

scientific publications, broadcasts, articles, symposiums, events, and programs. Expanding on these accomplishments, GSENM, along with our partners, are promoting a variety of educational and public outreach options. These include award-winning exhibits at our four visitor centers, an acclaimed lecture and field seminar program, curriculum-based environmental education programs, a Junior Explorer program, traveling science exhibits, and much more.

Besides all this, GSENM offers spectacular scenery too. Truly, GSENM provides exceptional opportunities for everyone to explore and learn from the land we share. So, indulge the scientist within you and discover GSENM for yourself.

LEGEND

- Highway and Road Information**
- 89 US Highway
 - 12 State Highway
 - Open Road - Unpaved (Street-legal Vehicles Only)
 - Open Road - Paved (Street-legal Vehicles Only)
 - Open Road - Unpaved (All Vehicles)
 - Road Outside GSENM Boundary, Check with Local Agency For Appropriate Regulations

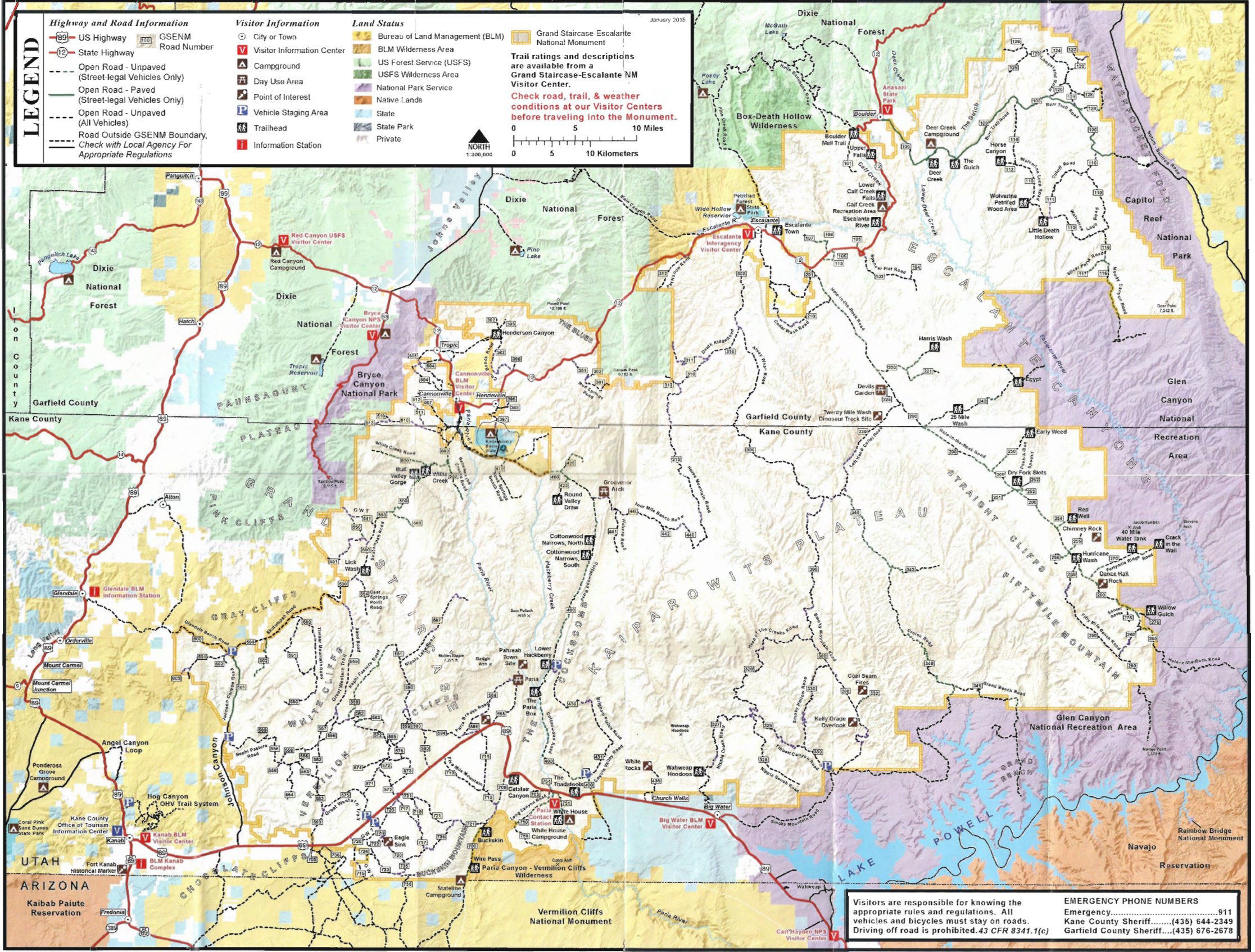
- Visitor Information**
- City or Town
 - Visitor Information Center
 - Campground
 - Day Use Area
 - Point of Interest
 - Vehicle Staging Area
 - Trailhead
 - Information Station

- Land Status**
- Bureau of Land Management (BLM)
 - BLM Wilderness Area
 - US Forest Service (USFS)
 - USFS Wilderness Area
 - National Park Service
 - Native Lands
 - State
 - State Park
 - Private

Trail ratings and descriptions are available from a Grand Staircase-Escalante NM Visitor Center.

Check road, trail, & weather conditions at our Visitor Centers before traveling into the Monument.

0 5 10 Miles
0 5 10 Kilometers



Visitors are responsible for knowing the appropriate rules and regulations. All vehicles and bicycles must stay on roads. Driving off road is prohibited. 43 CFR 8341.1(c)

EMERGENCY PHONE NUMBERS
 Emergency.....911
 Kane County Sheriff.....(435) 644-2349
 Garfield County Sheriff.....(435) 676-2678